

Everything That You Wanted to Know. Albany 2013: The 18th Conversation

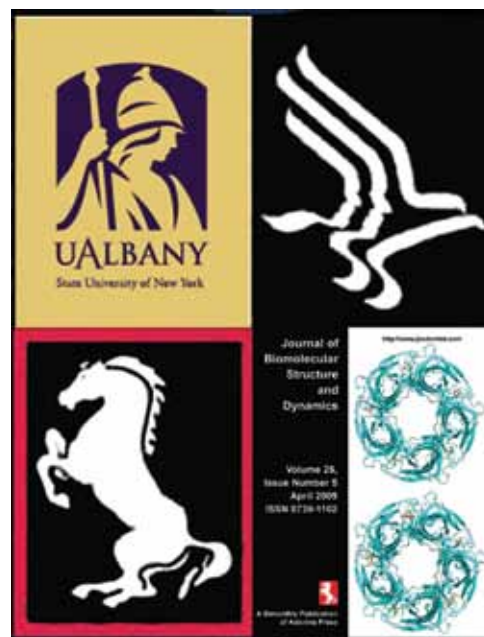


Sponsored by:

University at Albany
Department of Chemistry
Department of Biology
Office of the Dean, Arts & Sciences
Vice President for Research
National Institutes of Health (pending)
JBSD
Adenine Press

What do you want to know?

	Page #
Where is the Conversation held? Orientation?	2
Where am I staying? Empire Commons	2
How do you get to Albany, NY? to Empire Commons	2
Arriving at Empire Commons and Parking	2
Arriving by Train	3
Flying into Albany	3
Date and Time of Arrival	3
Are You Arriving Early? Are You Leaving Late?	4
Living at Empire Commons, Shopping, Alcohol Use	4
Where Do You Register and Pick Up Your Stuff on the 11th of June?	4
Where Do You Register If You Are Coming After June 11th?	4
Do Not Misplace Your Name Badge	4
Time & Place of Meals: Meal Pass; Signup for Big Feast	4 & 5
Lecture Center 18	5
Communications	5
Registered, But Not Going to Show Up	5
Have Not Yet Paid the Registration Fee, Despite Reminders	5
Unregistered, But Want to Come	5
Want to Present a Poster, Have Not Yet Submitted an Abstract	5
Departure	5
Poster Session: General	5
When and Where Should You Mount Your Poster?	6
Lecturers and Chairs of Sessions	6
Lecture Facilities	6
Final Check List	6
Detailed schedule of lectures and poster sessions	7 & 8



Where is the Conversation held? Orientation ?

It is held at the University at Albany, located at 1400 Washington Avenue, Albany NY 12222; it is a city by itself. It is an urban institution located away from the city center and city life. The Conversation takes place in the academic podium which looks like (see below) something out of Star Wars.

At the center of the podium is a pool (see bottom right). The pool is surrounded by a glass enclosed concourse, and the lecture centers. The poster session of the 17th Conversation is held in the concourse, and the lectures are in LC-18.

Where am I staying? Empire Commons

You are staying at Empire Commons within campus, unless you have made your own arrangement to stay elsewhere. In the sky-view of part of the campus, Figure 3 on the next page, locate the Empire Commons on the northwest of the diagram. Diagonally across you will find the 18th Conversation site and the pool. The location of this pool is a good reference point to orient yourself.

Due to renovations, this pool, and the surrounding glass walls, embracing the concourse are inaccessible now. The very large grass circle in Figure 3, next page, is Collins Circle beyond which you see the main road, Washington Ave. On Washington Ave. are located several hotels and motels. These hotels and motels are in totally barren locations, there are no humans, shops, or restaurants anywhere near to walk by; these hotels and motels are just tasteless buildings with ugly signs that are strewn in between Washington Ave and Interstate 90, and are very boring and lonely places to stay. All the life is across at the University campus with grand gardens and tree-lined boulevards, breath taking fountains, shopping centers and a lot of places to eat, walk, and hang around. 95% of the 18th Conversation participants are staying at the Empire Commons. From the Empire Commons you can walk straight to the academic podium *via* Carillon Dr. West. When you have passed half of the podium, you will see an entrance to the podium with slender columns and a window to the Sun God. Follow signs posted to reach Conversation site.

Arrival to Albany, NY? to Empire Commons

The map on the next page, Figure 4, gives you the location of the University at Albany within the context of the various interstate highways that run through Albany and the Albany airport.



The University is located at the very heart of the interstate highways 87 and 90.

The GPS location of Empire Commons is: Liberty Ln and W University Dr., Albany NY 12201

Many of you from Boston, New York, Montreal, and Buffalo may be coming by car. **From Buffalo** take 90 East and you are in Albany in 5 hrs. At Albany take exit 24, immediately you will see the signs for the University and 90 East, follow 90 East and take exit 2: at the end of the exit you will be facing the evocative architecture of the University; you can drive straight thru the lights into the University and follow the perimeter road (Univ. Dr. West) on your right to Empire Commons (see Fig. 3). If you are staying in a motel, at the end of exit 2 take a left (you are on Washington Ave) and within a minute you will see on the left the hotels Marriott Courtyard, Hilton Garden Inn, Extendedstay America, and Fairfield Inn.

From New York, interstate 87 will deposit you at exit 24 and from there follow the above instructions. **From Montreal**, when you reach Albany *via* I-87, follow 90 East (exit 1E and stay right) and you will be at exit 2 described above within minutes.

If you are coming by car from Boston after driving some 150 miles on I-90 West you will see exit B1; pay toll and continue to drive to Albany for 18 miles. Take Exit 2 (Fuller Road, UAlbany). At the end of the exit you will see a roundabout, take the third exit at the roundabout to Fuller Road. Stay on fuller road, driving under the newly elevated Washington Avenue; you will see on the left yellow /orange buildings of the Empire Commons. Soon you will see a second roundabout, take the third exit in the roundabout to Tricentennial Dr. Within 0.2 miles you will reach W University Dr. Turn left, and you will be at Liberty Ln and Empire Commons within 0.1 miles.

Arriving at Empire Commons and Parking

Once you reach the front of Empire Commons, you will see the long Community Center. You can park in the nearby areas, register and checkin in at the Community Center. You need to pay \$20.00 for parking from 11th to 15th of June. You can buy parking permits at registration. Drive your car to the South Gold Lot (see Fig. 3, above) area and park there, hang the permit from the rear view mirror. You can also park at West Gold or Colonial



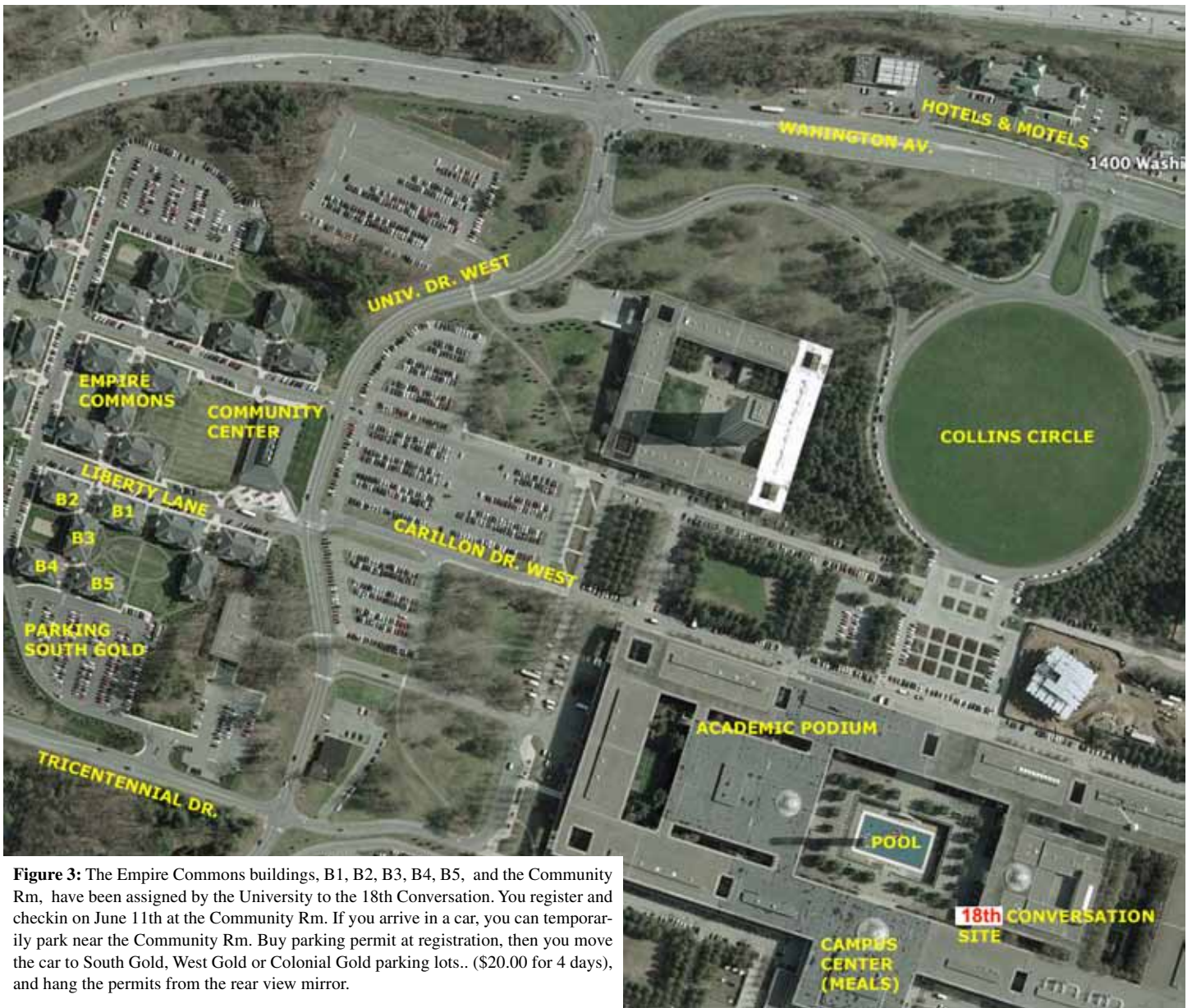


Figure 3: The Empire Commons buildings, B1, B2, B3, B4, B5, and the Community Rm, have been assigned by the University to the 18th Conversation. You register and checkin on June 11th at the Community Rm. If you arrive in a car, you can temporarily park near the Community Rm. Buy parking permit at registration, then you move the car to South Gold, West Gold or Colonial Gold parking lots.. (\$20.00 for 4 days), and hang the permits from the rear view mirror.

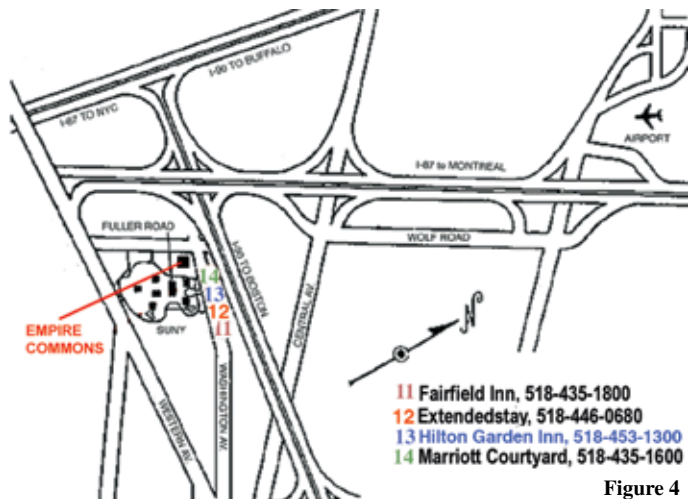


Figure 4

Gold lots. You can park in any student/faculty lots, except special permit areas.. One cannot park in University property without parking permits. If you want to park within the University, without permit, you must park at the lot for visitors for a fee. Everything is within walking distance.

Arriving by Train. If you are enchanted by a train, riding along the exuberant and happy Hudson, the deers in natural expression running wild in the June sun, you can have a memorable travel from New York City Penn Station and disembark at Rensselaer/Albany Station; a cab will take you through downtown Albany, where the rows of antique brown stones challenge the imperium of Rockefeller concrete, to Empire Commons at the uptown Campus; it is a 15 minute trip through the old and new world, but ask the cabby the fare before you board, and tell him that you want to go to Empire Commons, Community Center, uptown campus, 1400 Washington Ave.

Flying into Albany. For those who fly into the Albany airport, the University is about 10-15 minutes away in a taxi. It is impossible for us to pick all of you up at the airport. So take a cab to Empire Commons at the uptown campus of SUNY at 1400 Washington Ave.

Date and time of arrival

All are expected to arrive on Tuesday June 11th, at least by afternoon, if at all possible. Posters can be mounted on their stations

this after noon. See details later. Cafeteria at Campus Center opens at 4 pm for dinner. A Wine and Cheese Reception will be held for all delegates at Community Rm, Empire Commons, 8:30-11:30 pm. Even though all steps are taken to avoid inordinate delays for registration, it will help the system if the delegates can arrive between 1:00 pm to 6:00 pm, rather than between 4:00 pm-10 pm. Arriving early in the day also provides time to put up the poster displays. Some of you have to arrive a day early because of flight regulations. Some of you have to stay over Saturday the 15th to save money on the airlines.

Are you arriving early? Are you leaving late?

Please note that Empire Commons is not a hotel and is not open 24 hrs. If you are arriving in the middle of the night or arriving earlier than the 14th of June and/or leaving after June 18th, you must let Prof. Sarma and Empire Commons know about this as soon as you know.. Below are the coordinates for Empire Commons:

email: univapts@albany.edu
office phone: 518-956-6250
phone (after hours): 518-708-0426

Living at Empire Commons

Living at Empire Commons is like living in a house; all buildings at Empire Commons are air conditioned, fully furnished and equipped. Each apartment has four bed rms, a living rm, a kitchen and two baths, and a laundry rm. The kitchen refrigerator will have no food or drinks. If you want bottled water, juice etc, in your kitchen refrigerator, you must bring them. During



the day time, you can buy them from University shops at the campus center. The nearest shopping center is a 10 minute walk along fuller road to Stuyvesant Plaza as the map above shows. If you are arriving early or leaving late, this shopping center is a good place to find a place to eat, buy a bottle of wine or go to the post office. There is a huge mall called Crossgate Mall near the Empire Commons. It is a seven minute bus ride in Bus #12. The bus leaves Collins Circle at the Univ. to Crossgate every 10-15 minutes.

Alcohol Use within the University

Of course, guests can buy and bring alcoholic products and consume them and serve them to others within the privacy of their apartments in Empire Commons. However, alcohol consumption in all public places in the University is prohibited, unless served by a NY State License holder. Chartwells Organization holds the exclusive rights to serve alcoholic beverages in public places within the University.

Where Do You Register and Pick Up Your Stuff on the 11th of June?

The registration desk is at the Community Center, Empire Commons and it will open at 1:00 PM on Tuesday the 11th of June and will remain open till 11 PM on that day. Wherever you are staying, you must appear on the 11th of June at the registration desk at the Community Center and complete the formalities, pick up your Name Tag and the Book of Abstracts and the program.

Where Do You Register If You Are Coming After June 11th?

Go to LC 18 and register for the conference at the desk in front of this hall and pick up your materials.

Do Not Misplace Your Name Badge

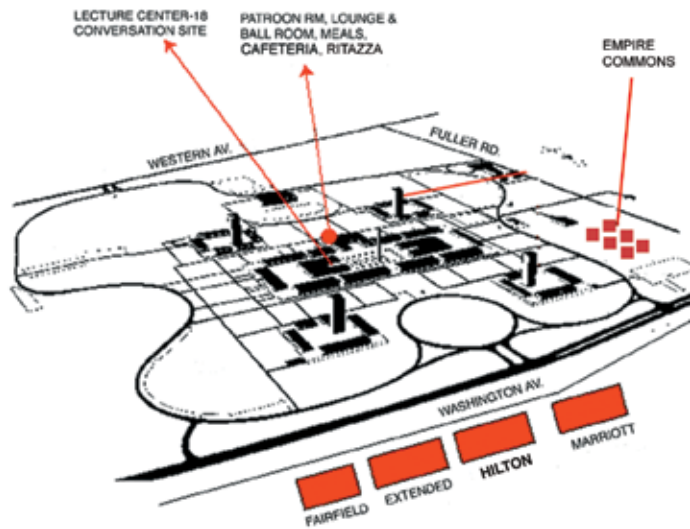
At the Conversation site you will be given an official Name Badge. Do not misplace this. The security at the symposium hall (LC-18) will not admit you without it. If the name is misspelled or the affiliation is wrong, please correct it with a pen before a new one could be made.

Time & Place of Meals

We provide complimentary continental breakfasts every day in the concourse near LC-18 starting at 7 am. Lunches: Except for Saturday June 18, you buy lunch for cash at Campus Center Cafeteria or at the open air Barbecue Grill (weather permitting) at the fountains in front of the Science library, just across from the Cafeteria Hall. They are open 11 am to 2:00 pm. Dinners: Except for Wednesday June 12th and Friday June 14th, you buy dinner for cash at Campus Center Cafeteria, 4 to 7 pm. Those of you who have requested Kosher meals should identify themselves to the food staff during the meals. Vegetarian is always present in sufficient variety and quantity during all meals.



Blowup of the pool and Campus Center. There is a fountain in front of the campus center. Enter Campus Center behind this fountain. The patroon room dining and ball rooms are upstairs; for the cafeteria walk straight, and take stairs down. Behind Campus Center, in front of Science Library, you will see the barbecue grill for lunch.



Meal Pass

A white name badge will admit you to the Conversation and all meals. A gold name tag means that you have elected to attend only the Conversation. A green name tag means you are an accompanying person having meals at the Conversation.

Sign Up for Big Feast

If you have a white or green Name Tag, your cost for Big Feast on Friday night is covered. However, if you are planning to come for the Big Feast, you must sign up for the Big Feast on the sheets displayed at registration area.

Lecture Center 18

Lecture Center 18 (LC 18) is the place where we hold the symposium and it is located at the center of the University around a pool; the poster sessions will be held in the concourse around the pool. See the maps above.

Communications

Empire Commons buildings are fully wired for internet world wide communications and 18th Conversation guests are allowed access to internet for a fee. You must bring a standard Ethernet cable (that should not exceed 25 ft in length) to connect your laptop to the data connector on the wall boxes on each room. Sometimes people mistakenly use the phone jack and this won't provide network service. In most cases the data jacks are purple in color and the phone jacks are blue.

Empire Commons buildings have only emergency phone connections in their rooms. However we provide in building B4, Apartment 101 phones with free local calls, and telephone card or credit card driven long distance calls.

Current Status of the Program

The configuration and scheduling of the lectures and posters appear on pages 7 and 8.

Two Major Requests

If you are scheduled to give a lecture, and certain emergencies precipitate and you cannot come, please let me know as soon as you are hit with the emergency. There are several people waiting and anxious to give lectures on some very important discoveries

and they all are looking for space.

If you have a poster abstract at the web site, and you are unable to come and present it as a poster, please let me know by email so that we can save a poster station. Please do not waste a station.

It May Rain? Wake-up Call? Valuables?

Even though the walk between LC18 and Empire Commons is only a few minutes, and because the gods do not let us control the weather, please bring an umbrella, rain coat etc.; please bring an alarm clock. We strongly advise you not to keep any valuables inside your room. Empire Commons and the University are not responsible for any theft from your room. Give to front desk for safe keeping.

Registered, But Not Going to Show Up

If you are registered, and not planning to come, please let us know by email, phone, or fax. Please let us know whether you are occupying poster space and accommodation space.

Have Not Yet Paid the Registration Fee, Despite Reminders

If you have been reminded that the University has not received the fees, please take care of it. The forms are available at the Conversation web site.

Unregistered, But Want to Come

Go to Empire Commons on June 11th and register as a "walk in" & follow instructions just above.

Want to Present a Poster, Have Not Yet Submitted an Abstract

Email an msdoc word file of the abstract now. If we accept the abstract, we will load it at the web site of the Conversation. We cannot publish your abstract in the Book of Abstracts because it is already printed now. When you come to Albany, bring with you 250 copies of your abstract and leave this at the registration desk in front of LC-18 for people to pick up. Contact Dr. Sarma by email to get the number of the poster station where you should mount your poster.

Departure

On Saturday, June 15th, after lunch you are ready to leave at about 2:00 pm. There are no organized trips to the airport/Amtrak rail station. Interested parties should get together and organize appropriate cab trips.

Poster Session: General

The poster papers are an exciting component of the Albany agenda. In order to assure their success it is imperative that the following procedures be followed:

All posters must be mounted on assigned stations on June 11th or before the start of the deliberations at 8:00 am, next day morning. The posters shall remain in their stations throughout the symposium until Friday evening. Some 200 poster stations are in the concourse around LC18 and one will see large numbers of people milling around and reading the posters all the time. Posters are a continuing event at Albany. Because of this unusual aspect of the Albany Conversation one should prepare the posters as self-explanatory as possible. One should also leave blank sheets of paper to leave addresses to receive reprints

and additional materials. Posters must be removed before 2:00 pm on Saturday. After that the University cleaning crew will throw them away.

Even though the poster session is a continuing event, the posters are formally presented at specific times as noted in the detailed schedule. We anticipate the formal presentation of about 30 posters at each time. During the above periods the presenters are expected to "man" their posters instead of running around and reading other posters. We know that this is irresistible. Let us assure you that you are not going to miss any good stuff because all posters remain in their stations until Friday evening.

Poster Session:

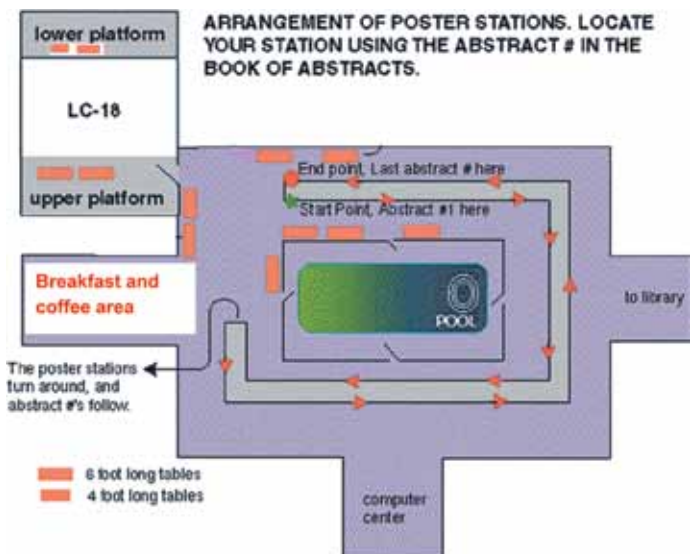
When and Where Should You Mount Your Poster?

All posters are mounted on June 11th at a station which displays the abstract number of your abstract in the Book of Abstracts. Poster abstracts are sequentially numbered in the book of abstracts appearing in the issue of the Journal Biomolecular Structure and Dynamics, and 30 or so posters are sequentially presented at one time in the poster session sequences Wednesday through Friday. People should mount their poster only in the station designated by abstract # of their abstract.

You will not know the poster station number of your abstract until you see the Book of Abstracts distributed free of charge at the Conversation site. The Book will also be available to download a few weeks before the Conversation begins.

Note that in the abstract book, the abstracts are arranged in no particular order; it also contains abstract of lectures and there could be 'no show' poster abstract. Look up in the author index, locate the abstract #'s, then go to that poster station bearing your number.

The area allowed for the poster is 4' x 4'. Poster boards are hard peg boards with thousands of tiny holes. There are two ways to mount your poster: (1) Bring your poster all prepared on a heavy paper 4' x 4' and hang them on the poster station (2) If you bring your poster in bits and pieces on several pieces of paper, use heavy duty tapes to attach them. You bring



your own supplies to mount the poster. You can also use tapes in various colors to add a dash of brilliance to your station.

The map below shows the configuration of the Conversation site including LC-18 and where posters are mounted. They all happen around the pool at the center of the University.

Lecturers and Chairs of Sessions

All lectures will be held in Lecture Center 18 at the University. Speakers should set aside 1-3 minutes for discussion depending upon the length of the allotted time. The Chair of each session controls a light system of yellow (2 to 1 minutes left) and red (stop immediately, you are into discussion time). Normally there will be no discussion after the short talks (young scientists speakers) of the "lecture + poster" category because the discussion is supposed take place at the poster stations. Within reason, Chairs have the right to terminate or shorten a speaker's time, if the speaker is incoherent and unable to communicate properly with the audience. Chairs are requested to make sure that during discussion periods, people who have questions should go to the microphone stands and identify themselves and then ask the questions; they are not allowed to shout questions at the speaker from their seats.

Lecture Facilities

The system in place in LC-18 allows the speaker to project the in-house equipment which includes: a PC, Document Camera and a DVD/VHS player. It also allows the speaker a Laptop/ Aux and USB connection. In general in University at Albany, speakers feel comfortable to use projection from their own note books using their own programs. If you are a mac user, some of them will come with a special adapter to hookup, and bring this with you. Speakers are strongly advised to bring backup of their power point slides. The document camera allows display from overhead transparencies. There will be staff to help the speaker to set up their projections. If you are interested in further details of our system, they can be found at the YouTube:

<http://www.youtube.com/user/ualbanyav>

Final Check List

- Arrange your travel plans so that you reach Albany before 6:00 pm on Tuesday June 11th and leave after 2:30 pm on Saturday June 15th.
- If you are arriving earlier than the 11th of June, let Prof. Sarma know your arrival time so that appropriate arrangements can be done for letting you into Empire Commons.
- Your poster, heavy duty tape and strings
- Power Notebooks, backups and power supply compatible to US standards
- Alarm clock, umbrella, and rain coat.
- A copy of this communication & the attached maps.

Ramaswamy H. Sarma
 Chemistry, Rm: 234, Univ. at Albany, Albany NY 12222 USA
 Email: rhs07@albany.edu
 Phone: 518-456-9362; Fax: 518-452-4955
 April 10, 2013

Tuesday, June 11: You are arriving Today		Thursday, June 13	
1:00-10:00 pm	Mount your posters around LC-18 concourse	7:00-8:30 am	Breakfast, LC-18 Concourse
4:00-7:00	Dinner-Campus Center Cafe; you pay cash & buy	8:00-9:50	Session 7: DNA-Protein I <i>Chair: Wilma Olson, Rutgers</i>
6:00-8:00	JBSD + Organizing Cmte Dinner, Sitar	8:00-8:20	Zhiping Weng, Univ. of Mass
8:30-12:00 am	Wine & Cheese Reception, Empire Commons,	8:20-8:30	Namiko Abe, Columbia Univ.
Wednesday, June 12		8:30-8:40	Diva Murugesapillai, Northeastern Univ.
7:00-8:30 am	Breakfast, LC-18 Concourse	8:40-8:50	Boian S. Alexandrov, LANL, Los Alamos
8:00-8:10 am	Welcome by President Robert Jones and Chair Li Niu	8:50-9:00	Alexander Lomzov, ICBFM, Novosibirsk, Russia
8:10-10:10	Session 1: RNA and Its Complexities <i>Chair: Victor Zhurkin, NIH</i>	9:00-9:20	<i>Chair: Luis Marky, Univ. of Nebraska</i>
8:10-8:30	Paul Schimmel, Scripps	9:20-9:30	David Edgell, Western Ontario Univ., Canada
8:30-8:40	Kimberly Harris, Univ. at Albany	9:30-9:40	Alexander Ivanov, Blokhin Institute, Moscow, Russia
8:40-8:50	Aaron Engelhart, Harvard	9:40-9:50	Shruti Koulgi, CDAC, Pune Univ., India
8:50-9:10	Joachim Frank, Columbia Univ.		Erin M. McConnell, Carleton Univ., Canada
	<i>Chair: J. Sponer, Czech Republic</i>	9:50-10:50	Coffee and Poster Session III
9:10-9:30	Gloria Culver, Univ. of Rochester	10:50-12:20	Session 8: DNA-Protein II <i>Chair: Tom Tullius, Boston Univ.</i>
9:30-9:40	Paul Whitford, North Eastern Univ.	10:50-11:10	Yael Mandel-Gutfreund, Technion, Israel
9:40-9:50	Brittany Burton Lott, Univ. of Memphis	11:10-11:20	Tianyin Zhou, USC
9:50-10:10	Ruth Sperling, Hebrew Univ. of Jerusalem, Israel	11:20-11:30	Raluca Gordan, Duke Univ.
10:10-11:10	Coffee and Poster Session I	11:30-11:40	Allan Lazarovici, Columbia Univ
11:10-12:30	Session 2: Origin of Life & Evolution: I <i>Chair: Nick Hud, Georgia Tech</i>		<i>Chair: Tom Bishop, Louisiana Tech Univesity</i>
11:10-11:30	Phil Holliger, MRC, Cambridge UK	11:40-12:00	Tali Haran, Technion
11:30-11:50	Irene Ann Chen, UC Santa Barbara	12:00-12:10	Haim Rozenberg, Weizmann
	<i>Chair: Ernesto Di Mauro, Univ. of Rome, Italy</i>	12:10-12:20	Feng Cui, RIT
11:50-12:10	Samanta Pino, University of Rome, Italy	12:20-1:30	Lunch, Campus Center Cafeteria & Barbique Pit (open 11 am- 2 pm) you pay cash and buy
12:10-12:20	Shenglong Zhang, Harvard	1:30-2:40	Session 9: Exciting Developments/Breakthroughs - I <i>Chair: Angel Garcia, RPI</i>
12:20-12:30	Judit Sponer, Czech Republic	1:30-1:50	David E Shaw, Shaw Research & Columbia Univ.
12:30-1:30	Lunch, Campus Center Cafeteria & Barbique Pit (open 11 am- 2 pm) you pay cash and buy	1:50-2:00	Gang Ren, UC Berkeley
1:30-2:40	Session 3: Origin of Life & Evolution: II <i>Chair: Edward Trifonov, Univ. of Haifa, Israel</i>	2:00-2:10	Gaurav Arya, UC San Diego
1:30-1:50	Gustavo Caetano-Anollés, Univ. of Illinois, Urbana	2:10-2:20	Nicolas Clauvelin, Rutgers
1:50-2:00	Olga Novikova, Univ. at Albany	2:20-2:40	Frank Alber, Univ. of Southern California
2:00-2:20	Günter Wächtershäuser, Germany	2:40-3:40	Session 10: Exciting Developments/Breakthroughs - II <i>Chair: Maxim Frank-Kamenetskii, Boston Univ.</i>
2:20-2:40	George Fox, Univ. Houston	2:40-3:00	Dima Kozakov, Boston Univ.
2:40-3:40	Session 4: Origin of Life & Evolution: III <i>Chair: Prakash Joshi, RPI</i>	3:00-3:10	Aditya Padhi, IIT Delhi, India
2:40-3:00	Zakharia Frenkel, University of Haifa, Israel	3:10-3:20	Saugata Hazra, Albert Einstein
3:00-3:10	Sudha Rajamani, IISER, Pune, India	3:20-3:40	David Deamer, Univ. of California, Santa Cruz
3:10-3:20	Vladimir Kompanichenko, RAS, Birobidzhan, Russia	3:40-4:40	Coffee & Poster Session IV
3:20-3:40	Charlie Carter, Univ. North Carolina	4:40-5:45	Session 11: Genome Weak Links-I <i>Chair: Sergei Mirkin, Tufts Univ.</i>
3:40-4:40	Coffee & Poster Session II	4:40-4:45	Remarks by the Chair
4:40-5:50	Session 5: Multiplexes & Loops-Universal Signal <i>Chair: Helen Hansma, Univ. Calif., Santa Barbara</i>	4:45-5:05	Batsheva Kerem, The Hebrew University of Jerusalem
4:40-5:00	Linda McGown, RPI	5:05-5:15	Ian M Slaymaker, USC
5:00-5:10	Aaron Fleming, Utah	5:15-5:25	Michael Carpenter, Univ. of Minnesota
5:10-5:20	Katherine Castor, McGill, Montreal, Canada	5:25-5:45	Susan Lovett, Brandeis Univ.
5:20-5:30	Wan Jun Chung, Nanyang Tech. Univ., Singapore	5:45-7:30	Dinner, Campus Center Cafeteria (open 4:00-7:10 pm) you pay cash and buy
5:30-5:40	Carla Theimer, Univ. at Albany	7:30-8:45	Session 12: Genome Weak Links-II <i>Chair: Vsevolod Makeev, Vavilov Inst., Moscow.</i>
5:40-5:50	Petra Kührová, Palacky Uni. Czech Republic	7:30-7:50	Karen Vasquez, Univ of Texas, Austin
5:50-7:30	Dinner, Patroon Rm, (open at 5:30 pm)	7:50-8:00	Guliang Wang, Univ of Texas, Austin
7:30-9:30	Session 6: Nobel Laureates: Evening Lectures <i>Chair & Introduction: Zippi Shaked, Weizmann</i>	8:00-8:10	Elena Yakubovskaya, Stony Brook
7:30-7:35	Ada Yonath, Weizmann Institute, Israel	8:10-8:20	Ryan McGinty, Tufts Univ.
7:35-8:30	<i>Chair & Introduction: Wolfram Saenger, Free Univ.</i>	8:20-8:40	Andrés Aguilera, University of Seville, Spain
8:30-8:35	Jack Szostak, Harvard	8:40-8:45	Sergei Mirkin concludes the session
8:35-9:30		8:45- 12:00 am	Ada Yonath Celebrations. Barry Honig acts as Master of Ceremonies. Ed Trifonov & Maxim Frank-Kamenetskii's Russian-Israeli Party Honors Ada Yonath.

Friday, June 14	Saturday, June 15: You are going home today after lunch
7:00-8:30 am Breakfast, LC-18 Concours	7:30-9:30 am Breakfast, LC-18 Concours
8:00-9:50 Session 13: Intrinsically Unstructured Proteins <i>Chair: Vladimir Uversky, Univ of South Florida.</i>	8:45-10:35 Session 19: Virus Structure & Function <i>Chair: Paul Agris, Univ. at Albany</i>
8:00-8:20 Igor Lednev, Univ at Albany.	8:45-9:05 Gabriele Varani, University of Washington
8:20-8:40 Liz Rhoades, Yale Univ.	9:05-9:25 Nikolai Ulyanov, NIH
8:40-9:00 Vinod Subramaniam, The Netherlands	9:25-9:35 Ashutosh Srivastva, CSIR, Hyderabad, India
9:00-9:10 Jessica Stiltberg-Liberles, Univ. of Wyoming	 <i>Chair: Saraswathi Vishveshwra, IISc, Bangalore, India</i>
9:10-9:30 Sarah Bondos, Texas A & M	9:35-9:55 Avi Minsky, Weizmann Institute, Israel,
9:30-9:50 Antonio del Sol, University of Luxembourg	9:55-10:05 Sun Hur, Harvard Medical School
9:50-10:50 Coffee & Poster Session V	10:05-10:15 Poonam Singh, Central Drug Res. Inst., Luknow, India
10:50-12:30 Session 14. DNA Nanotechnology <i>Chair: Ned Seeman, NYU</i>	10:15-10:35 Dan Fabris, University at Albany
10:50-11:10 Paul Paukstelis, Univ. of Maryland	
11:10-11:30 Hiroshi Sugiyama, Kyoto Univ., Japan	10:35-10:55 Coffee
11:30-11:40 Graham Hamblin, McGill Univ., Montreal, Canada	10:55-12:55 Session 20: Nanopores <i>Chair: Meni Wanunu, Northeastern Univ.</i>
11:40-11:50 Tom Edwardson, McGill Univ., Montreal, Canada	10:55-11:15 Intro and Review by the Chair Wanunu
11:50-12:10 Yan Liu, Arizona State Univ	11:15-11:35 Alexander Grosberg, NYU
12:10-12:30 Tim Liedl, Ludwig Maximilians Univ, Germany	11:35-11:55 Murugappan Muthukumar, Univ. of Mass.
12:30-1:30 Lunch, Campus Center Cafeteria & Barbique Pit (open 11 am- 2 pm) you pay cash and buy	11:55-12:05 Giovanni Maglia, University of Leuven, Belgium
1:30-2:30 Session 15: Protein: Folding & Interactions I <i>Chair: Juan Perez, Univ. of Catalonia, Spain.</i>	12:05-12:15 Joseph Larkin, Northeastern University
1:30-1:50 George Rose, Johns Hopkins	12:15-12:35 Hagan Bayley, Univ. of Oxford, UK
1:50-2:00 Soma Ghosh, IISc, Bangalore, India	12:35-12:55 Liviu Movileanu, Syracuse Univ
2:00-2:10 Shraddha Thakkar, University of Arkansas	12:55-1:00 Ed Trifonov Closes the Conversation
2:10-2:30 Arie Ben-Naim, The Hebrew Univ. of Jerusalem	1:00-2:30 Farewell Lunch Empire Commons Lunch will be available starting at 11:45 am Go Home After Lunch or take lunch with you
2:30-4:10 Session 16: Protein: Folding & Interactions II <i>Chair: B. Jayaram, IIT, India</i>	
2:30-2:50 Robert Jernigan, Iowa State Univ.	
2:50-3:00 Alberto Perez, Stony Brook	
3:00-3:10 V. F. Morozov, Yerevan State Univ., Armenia	
3:10-3:30 Shoshana Wodak, HSCT, Toronto, Canada	
 <i>Chair: Thomas Cheatham, Univ. of Utah</i>	
3:30-3:50 Arie Warshel, Univ. of Southern California	
3:50-4:00 Nilesh K. Banavali, Wadsworth Center	
4:00-4:10 Sanjeev Singh, Alagappa University, India	
4:10-5:00 Coffee & Short Poster Session VI	
5:00-6:40 Session 17: Protein-Protein Interactions <i>Chair: Remo Rohs, Univ. of Southern California</i>	
5:00-5:20 Barry Honig, Columbia	
5:20-5:30 Partha Datta, IISER, Kolkata, India	
5:30-5:50 Anna Panchenko, NCBI	
 <i>Chair: Olga Fedorova, ICBFM SB RAS, Novosibirsk</i>	
5:50-6:10 Paramjit Arora, NYU	
6:10-6:20 Kiran Kumar Mustyala, Osmania Univ., India	
6:20-6:40 Udo Heinemann, MDC, Berlin, Germany	
7:30-12 am Big Feast, Campus Center Ball Room	