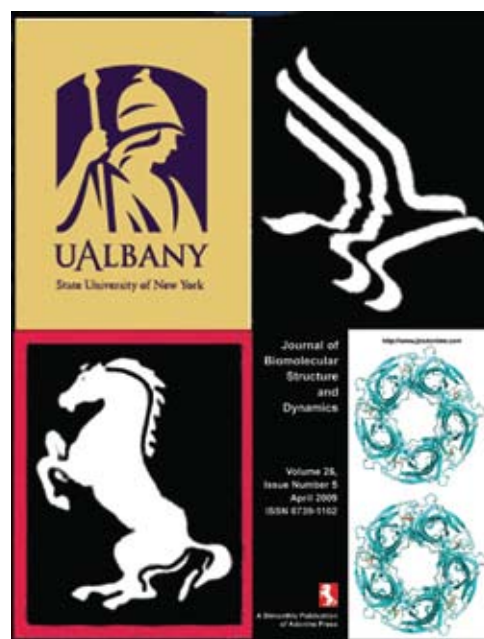


# Everything That You Wanted to Know. Albany 2011: The 17<sup>th</sup> Conversation



Sponsored by:

University at Albany  
 Department of Chemistry  
 Department of Biology  
 Office of the Dean, Arts & Sciences  
 Vice President for Research  
 National Institutes of Health (pending)  
 JBSD  
 Adenine Press



## What do you want to know?

	Page #
Where is the Conversation held? Orientation?	2
Where am I staying? Empire Commons	2
How do you get to Albany, NY? to Empire Commons	2
Arriving at Empire Commons and Parking	2
Arriving by Train	3
Flying into Albany	3
Date and Time of Arrival	3
Are You Arriving Early? Are You Leaving Late?	4
Living at Empire Commons, Shopping, Alcohol Use	4
Where Do You Register and Pick Up Your Stuff on the 14th of June?	4
Where Do You Register If You Are Coming After June 14th?	4
Do Not Misplace Your Name Badge	4
Time & Place of Meals: Meal Pass; Signup for Big Feast	4 & 5
Lecture Center 18	5
Communications	5
Registered, But Not Going to Show Up	5
Have Not Yet Paid the Registration Fee, Despite Reminders	5
Unregistered, But Want to Come	5
Want to Present a Poster, Have Not Yet Submitted an Abstract	5
Departure	5
Poster Session: General	5
When and Where Should You Mount Your Poster?	6
Lecturers and Chairs of Sessions	6
Lecture Facilities	6
Final Check List	6
Detailed schedule of lectures and poster sessions	7 & 8

### Where is the Conversation held? Orientation ?

It is held at the University at Albany, located at 1400 Washington Avenue, Albany NY 12222; it is a city by itself. It is an urban institution located away from the city center and city life. The Conversation takes place in the academic podium which looks like (see below) something out of Star Wars.

At the center of the podium is a pool (see bottom right). The pool is surrounded by a glass enclosed concourse, and the lecture centers. The poster session of the 17th Conversation is held in the concourse, and the lectures are in LC-18.

### Where am I staying? Empire Commons

You are staying at Empire Commons within campus, unless you have made your own arrangement to stay elsewhere. In the skyview of part of the campus, Figure 3 on the next page, locate the Empire Commons on the northwest of the diagram. Diagonally across you will find the 17th Conversation site and the pool. The location of this pool is a good reference point to orient yourself.

From this pool area you can directly enter the 17th Conversation site, the poster stations, and LC-18. From the pool you can walk up to the front of the academic podium. The very large grass circle in Figure 3, next page, is Collins Circle beyond which you see the main road, Washington Ave. On Washington Ave. are located several hotels and motels. These hotels and motels are in totally barren locations, there are no humans, shops, or restaurants anywhere near to walk by; these hotels and motels are just tasteless buildings with ugly signs that are strewn in between Washington Ave and Interstate 90, and are very boring and lonely places to stay. All the life is across at the University campus with grand gardens and tree-lined boulevards, breath taking fountains, shopping centers and a lot of places to eat, walk, and hang around. 95% of the 17th Conversation participants are staying at the Empire Commons. From the Empire Commons you can walk straight to the academic podium *via* Carillon Dr. West. When you have passed half of the podium, you will see an entrance to the podium with slender columns and a window to the Sun God.

### Arrival to Albany, NY? to Empire Commons

The map on the next page, Figure 4, gives you the location of the University at Albany within the context of the various inter-

state highways that run through Albany and the Albany airport. The University is located at the very heart of the interstate highways 87 and 90.

Many of you from Boston, New York, Montreal, and Buffalo may be coming by car. **From Buffalo** take 90 East and you are in Albany in 5 hrs. At Albany take exit 24, immediately you will see the signs for the University and 90 East, follow 90 East and take exit 2: at the end of the exit you will be facing the evocative architecture of the University; you can drive straight thru the lights into the University and follow the perimeter road (Univ. Dr. West) on your right to Empire Commons (see Fig. 3). If you are staying in a motel, at the end of exit 2 take a left (you are on Washington Ave) and within a minute you will see on the left the hotels Marriott Courtyard, Hilton Garden Inn, Extendedstay America, and Fairfield Inn.

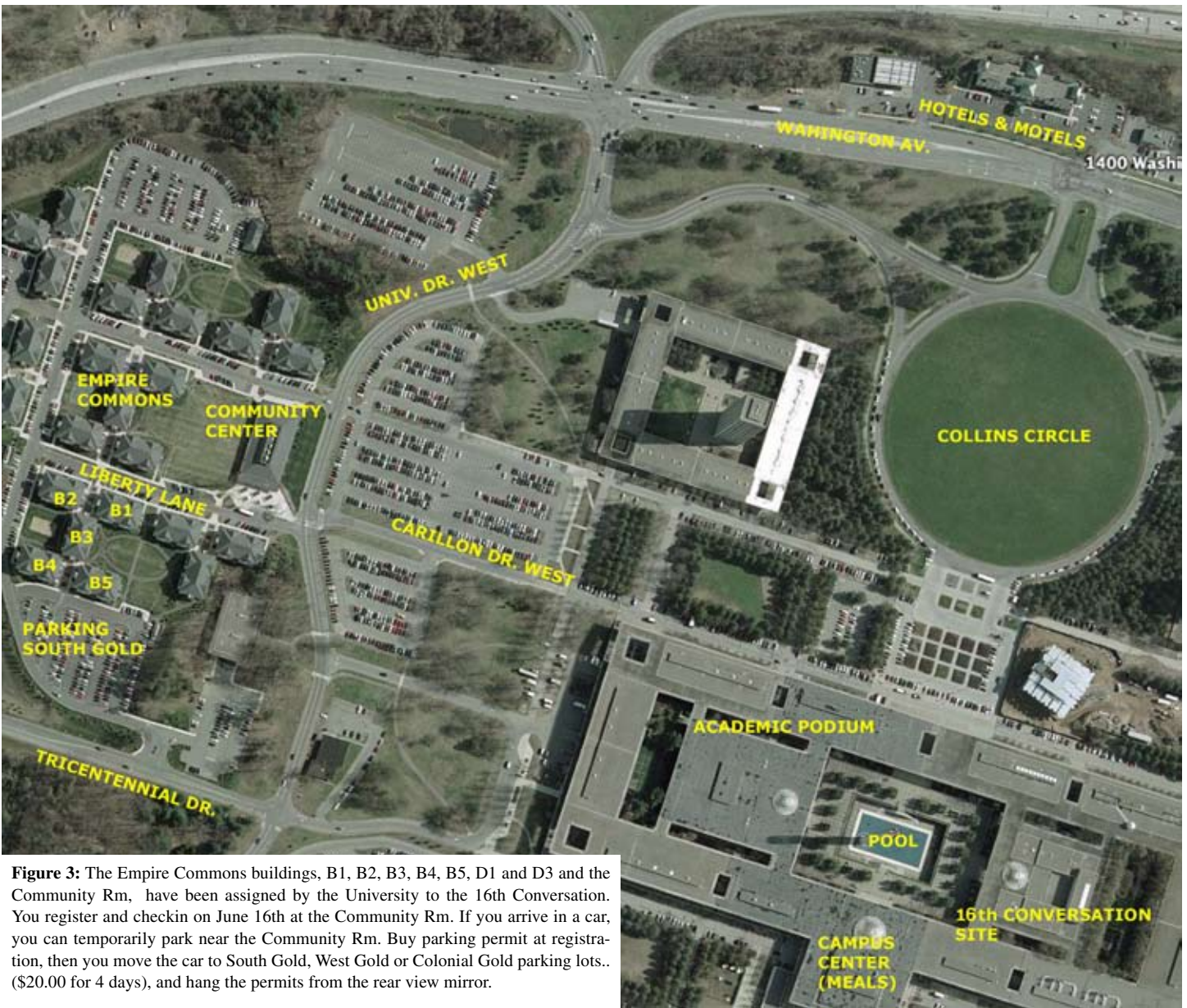
**From New York**, interstate 87 will deposit you at exit 24 and from there follow the above instructions. **From Montreal**, when you reach Albany *via* I-87, follow 90 East (exit 1E and stay right) and you will be at exit 2 described above within minutes.

If you are coming **from Boston**, about 40 miles before Albany on 90 West, you will pay a toll. After this toll you will see, exits B3, B2, and B1. Take exit B1 to continue on 90 West, pay a toll again. The 90 West will continue toward Buffalo through downtown Albany. In the Heavens you will get a glimpse of the spectacular Rockefeller Plaza penetrating the skys in a serene sun dance; continue along the busy highway, pregnant with plastic sounds and signs, the fried chickens and Big Macs, until you see exit 2 (Fuller Road and the University exit) on your right side. Take this exit, and at the end of this exit, on Fuller Road, take a left turn and drive for a minute or so. You will be at the intersection between Washington Avenue and Fuller Road. Take a left, and you are on Washington Ave; at the first traffic light after the turn, take a right and you will be facing the University. Drive on the right along perimeter road (Univ. Dr. West) to Empire Commons.

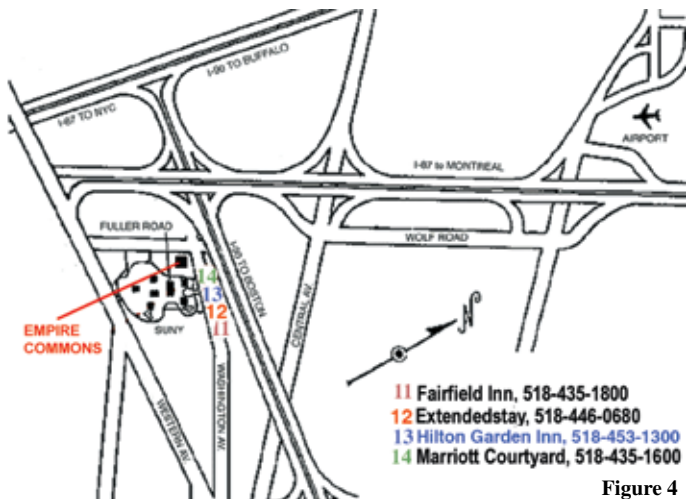
### Arriving at Empire Commons and Parking

Once you reach the front of Empire Commons, you will see the long Community Center. You can park in the nearby areas, register and checkin in at the Community Center. You need to pay \$20.00 for parking from 14th to 18th of June. You can buy parking permits at registration. Drive your car to the South Gold





**Figure 3:** The Empire Commons buildings, B1, B2, B3, B4, B5, D1 and D3 and the Community Rm, have been assigned by the University to the 16th Conversation. You register and checkin on June 16th at the Community Rm. If you arrive in a car, you can temporarily park near the Community Rm. Buy parking permit at registration, then you move the car to South Gold, West Gold or Colonial Gold parking lots.. (\$20.00 for 4 days), and hang the permits from the rear view mirror.



**Figure 4**

Lot (see Fig. 3, above) area and park there, hang the permit from the rear view mirror. You can also park at West Gold or Colonial Gold lots. The University has very tight parking regulations. One cannot park in University property without parking permits. If you want to park within the University, you must park at the lot

for visitors for a fee. Everything is within walking distance.  
**Arriving by Train.** If you are enchanted by a train, riding along the exuberant and happy Hudson, the deers in natural expression running wild in the June sun, you can have a memorable travel from New York City Penn Station and disembark at Rensselaer/Albany Station; a cab will take you through downtown Albany, where the rows of antique brown stones challenge the imperium of Rockefeller concrete, to Empire Commons at the uptown Campus; it is a 15 minute trip through the old and new world, but ask the cabby the fare before you board, and tell him that you want to go to Empire Commons, Community Center, uptown campus, 1400 Washington Ave.

**Flying into Albany.** For those who fly into the Albany airport, the University is about 10-15 minutes away in a taxi. It is impossible for us to pick all of you up at the airport. So take a cab to Empire Commons at the uptown campus of SUNY at 1400 Washington Ave.

**Date and time of arrival**

All are expected to arrive on Tuesday June 14th, at least by after-

noon, if at all possible. Posters can be mounted on their stations this afternoon. See details later. Cafeteria at Campus Center opens at 4 pm for dinner. A Wine and Cheese Reception will be held for all delegates at Community Rm, Empire Commons, 8:30-11:30 pm. Even though all steps are taken to avoid inordinate delays for registration, it will help the system if the delegates can arrive between 1:00 pm to 6:00 pm, rather than between 4:00 pm-10 pm. Arriving early in the day also provides time to put up the poster displays. Some of you have to arrive a day early because of flight regulations. Some of you have to stay over Saturday the 18th to save money on the airlines.

### Are you arriving early? Are you leaving late?

Please note that Empire Commons is not a hotel and is not open 24 hrs. If you are arriving in the middle of the night or arriving earlier than the 14th of June and/or leaving after June 18th, you must let Prof. Sarma and Empire Commons know about this as soon as you know. Below are the coordinates for Empire Commons:

email: univapts@albany.edu  
office phone: 518-956-6250  
phone (after hours): 518-337-3109

### Living at Empire Commons

Living at Empire Commons is like living in a house; all buildings at Empire Commons are air conditioned, fully furnished and equipped. Each apartment has four bed rms, a living rm, a kitchen and two baths, and a laundry rm. The kitchen refrigerator will have no food or drinks. If you want bottled water, juice etc, in your kitchen refrigerator, you must bring them. During



the day time, you can buy them from University shops at the campus center. The nearest shopping center is a 10 minute walk along fuller road to Stuyvesant Plaza as the map above shows. If you are arriving early or leaving late, this shopping center is a good place to find a place to eat, buy a bottle of wine or go to the post office. There is a huge mall called Crossgate Mall near the Empire Commons. It is a seven minute bus ride in Bus #12. The bus leaves Collins Circle at the Univ. to Crossgate every 10-15 minutes.

### Alcohol Use within the University

Of course, guests can buy and bring alcoholic products and consume them and serve them to others within the privacy of their apartments in Empire Commons. However, alcohol consumption in all public places in the University is prohibited, unless served by a NY State License holder. Chartwells Organization holds the exclusive rights to serve alcoholic beverages in public places within the University.

### Where Do You Register and Pick Up Your Stuff on the 14th of June?

The registration desk is at the Community Center, Empire Commons and it will open at 1:00 PM on Tuesday the 14th of June and will remain open till 11 PM on that day. Wherever you are staying, you must appear on the 14th of June at the registration desk at the Community Center and complete the formalities, pick up your Name Tag and the Book of Abstracts and the program.

### Where Do You Register If You Are Coming After June 14th?

Go to LC 18 and register for the conference at the desk in front of this hall and pick up your materials.

### Do Not Misplace Your Name Badge

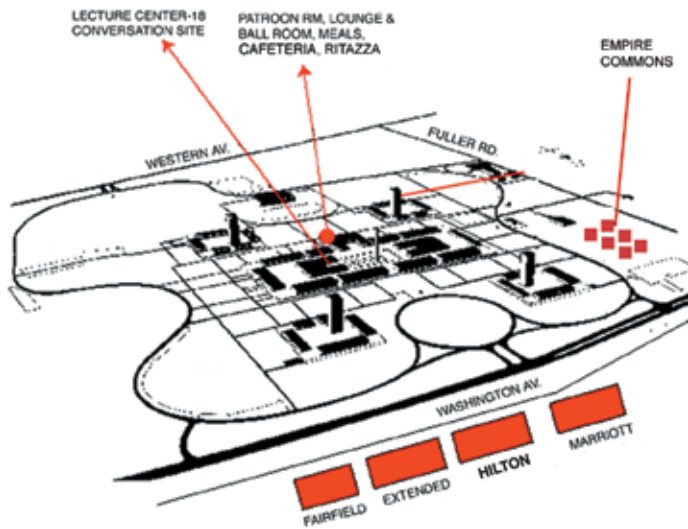
At the Conversation site you will be given an official Name Badge. Do not misplace this. The security at the symposium hall (LC-18) will not admit you without it. If the name is misspelled or the affiliation is wrong, please correct it with a pen before a new one could be made.

### Time & Place of Meals

We provide complimentary continental breakfasts. Wed June 15th; it starts at 7 am in the concourse close to LC-18. Starting with Thur June 16th, it is available as early as 6:15 am at the Hospitality Suites in B-4, Empire Commons. Those staying at Empire Commons can walk up, grab a coffee and muffin and take to their rooms. The breakfast at Hospitality suite is open for 3 hrs. Lunches: Except for Saturday June 18, you buy lunch for cash at Campus Center Cafeteria or at the open air Barbecue Grill (weather permitting) at the fountains in front of the Science library, just across from the Cafeteria Hall. They are open 11 am to 2:00 pm. Dinners: Except for Wednesday June 15th and



Blowup of the pool and Campus Center. From the central swimming pool and big fountain, just climb open stairs to the Campus Center. You will meet a second fountain. Enter Campus Center behind this fountain. The patroom dining and ball rooms are upstairs; for the cafeteria walk straight, and take stairs down.



Friday June 17th, you buy dinner for cash at Campus Center Cafeteria, 4 to 7 pm. Those of you who have requested Kosher meals should identify themselves to the food staff during the meals. Vegetarian is always present in sufficient variety and quantity during all meals.

### Meal Pass

A white name badge will admit you to the Conversation and all meals. A gold name tag means that you have elected to attend only the Conversation. A green name tag means you are an accompanying person having meals at the Conversation.

### Sign Up for Big Feast

If you have a white or green Name Tag, your cost for Big Feast on Friday night is covered. However, if you are planning to come for the Big Feast, you must sign up for the Big Feast on the sheets displayed at registration area.

### Lecture Center 18

Lecture Center 18 (LC 18) is the place where we hold the symposium and it is located at the center of the University around a pool; the poster sessions will be held in the concourse around the pool. See the maps above.

### Communications

Empire Commons buildings are fully wired for internet world wide communications and 17th Conversation guests are allowed access to internet for a fee. You must bring a standard Ethernet cable (that should not exceed 25 ft in length) to connect your laptop to the data connector on the wall boxes on each room. Sometimes people mistakenly use the phone jack and this won't provide network service. In most cases the data jacks are purple in color and the phone jacks are blue.

Empire Commons buildings have only emergency phone connections in their rooms. However we provide in building B4, Apartment 101 phones with free local calls, and telephone card or credit card driven long distance calls.

### Current Status of the Program

The configuration and scheduling of the lectures and posters appear on pages 7 and 8.

### Two Major Requests

If you are scheduled to give a lecture, and certain emergencies precipitate and you cannot come, please let me know as soon as you are hit with the emergency. There are several people waiting and anxious to give lectures on some very important discoveries and they all are looking for space.

If you have a poster abstract at the web site, and you are unable to come and present it as a poster, please let me know by email so that we can save a poster station. Please do not waste a station.

### It May Rain? Wake-up Call? Valuables?

Even though the walk between LC18 and Empire Commons is only a few minutes, and because the gods do not let us control the weather, please bring an umbrella, rain coat etc.; please bring an alarm clock. We strongly advise you not to keep any valuables inside your room. Empire Commons and the University are not responsible for any theft from your room. Give to front desk for safe keeping.

### Registered, But Not Going to Show Up

If you are registered, and not planning to come, please let us know by email, phone, or fax. Please let us know whether you are occupying poster space and accommodation space.

### Have Not Yet Paid the Registration Fee, Despite Reminders

If you have been reminded that the University has not received the fees, please take care of it. The forms are available at the Conversation web site.

### Unregistered, But Want to Come

Go to Empire Commons on June 14th and register as a "walk in" & follow instructions just above.

### Want to Present a Poster, Have Not Yet Submitted an Abstract

Email an msdoc word file of the abstract now. If we accept the abstract, we will load it at the web site of the Conversation. We cannot publish your abstract in the Book of Abstracts because it is already printed now. When you come to Albany, bring with you 300 copies of your abstract and leave this at the registration desk in front of LC-18 for people to pick up. Contact Dr. Sarma by email to get the number of the poster station where you should mount your poster.

### Departure

On Saturday, June 18th, after lunch you are ready to leave at about 2:00 pm. There are no organized trips to the airport/Amtrak rail station. Interested parties should get together and organize appropriate cab trips.

### Poster Session: General

The poster papers are an exciting component of the Albany agenda. In order to assure their success it is imperative that the following procedures be followed:

All posters must be mounted on assigned stations on June 14th or before the start of the deliberations at 8:00 am, next day morning. The posters shall remain in their stations throughout the symposium until Friday evening. Some 200 poster stations are in the concourse around LC18 and one will see large num-

bers of people milling around and reading the posters all the time. Posters are a continuing event at Albany. Because of this unusual aspect of the Albany Conversation one should prepare the posters as self-explanatory as possible. One should also leave blank sheets of paper to leave addresses to receive reprints and additional materials. Posters must be removed before 2:00 pm on Saturday. After that the University cleaning crew will throw them away.

Even though the poster session is a continuing event, the posters are formally presented at specific times as noted in the detailed schedule. We anticipate the formal presentation of about 30 posters at each time. During the above periods the presenters are expected to "man" their posters instead of running around and reading other posters. We know that this is irresistible. Let us assure you that you are not going to miss any good stuff because all posters remain in their stations until Friday evening.

**Poster Session:  
When and Where Should You Mount Your Poster?**

All posters are mounted on June 14th at a station which dis-

You will not know your poster station number until you see the June 2011 issue of the Journal of Biomolecular Structure and Dynamics, which will be distributed free of charge at the Conversation site. However, the pdf of the 200 page Book of Abstracts in vivid color, with poster station numbers, can be downloaded free of charge after from [www.jbsdonline.com](http://www.jbsdonline.com)

plays the abstract number of your abstract in the Book of Abstracts. Poster abstracts are sequentially numbered in the book of abstracts appearing in the June 2011 issue of the Journal Biomolecular Structure and Dynamics, and 30 or so posters are sequentially presented at one time in the poster session sequences Wednesday through Friday. People should mount their poster only in the station designated by abstract # of their abstract. Note that in the abstract book, the abstracts are arranged in no particular order; it also contains abstract of lectures and there could be 'no show' poster abstract. Look up in the author index, locate the abstract #'s, then go to that poster station bearing your number. The area allowed for the poster is 4' x 4'. Poster boards are hard peg boards with thousands of tiny holes. There are two

ways to mount your poster: (1) Bring your poster all prepared on a heavy paper 4' x 4' and hang them on the poster station (2) If you bring your poster in bits and pieces on several pieces of paper, use heavy duty tapes to attach them. You bring your own supplies to mount the poster. You can also use tapes in various colors to add a dash of brilliance to your station.

The map below shows the configuration of the Conversation site including LC-18 and where posters are mounted. They all happen around the pool at the center of the University.

**Lecturers and Chairs of Sessions**

All lectures will be held in Lecture Center 18 at the University. Speakers should set aside 1-3 minutes for discussion depending upon the length of the allotted time. The Chair of each session controls a light system of yellow (2 to 1 minutes left) and red (stop immediately, you are into discussion time). Normally there will be no discussion after the short talks of the "lecture + poster" category because the discussion is supposed take place at the poster stations. Within reason, Chairs have the right to terminate or shorten a speaker's time, if the speaker is incoherent and unable to communicate properly with the audience. Chairs are requested to make sure that during discussion periods, people who have questions should go to the microphone stands and identify themselves and then ask the questions; they are not allowed to shout questions at the speaker from their seats.

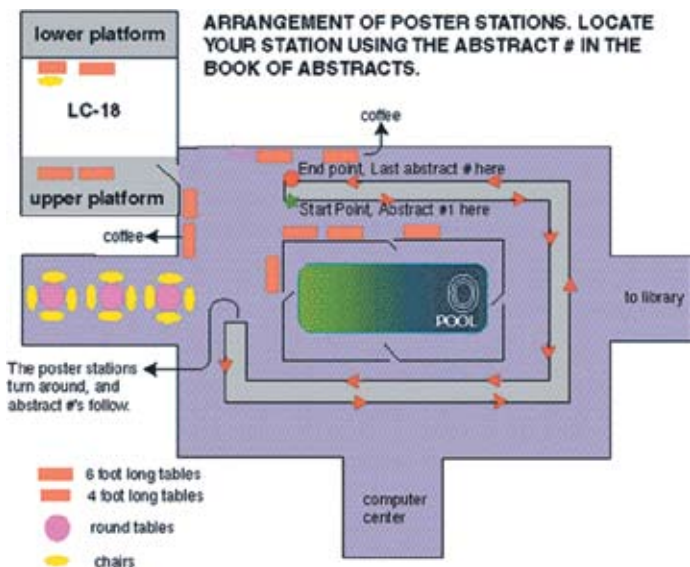
**Lecture Facilities**

The system in place in LC-18 allows the speaker to project the in-house equipment which includes: a PC, Document Camera and a DVD/VHS player. It also allows the speaker a Laptop/ Aux and USB connection. In general in University at Albany, speakers feel comfortable to use projection from their own note books using their own programs. If you are a mac user, some of them will come with a special adapter to hookup, and bring this with you. Speakers are strongly advised to bring backup of their power point slides. The document camera allows display from overhead transparencies. There will be staff to help the speaker to set up their projections. If you are interested in further details of our system, they can be found at the YouTube: <http://www.youtube.com/user/ualbanyav>

**Final Check List**

- Arrange your travel plans so that you reach Albany before 6:00 pm on Tuesday June 14th and leave after 2:30 pm on Saturday June 18th.
- If you are arriving earlier than the 14th of June, let Prof. Sarma know your arrival time so that appropriate arrangements can be done for letting you into Empire Commons.
- Your poster, heavy duty tape and strings
- Power Notebooks. backups and power supply compatible to US standards
- Alarm clock, umbrella, and rain coat.
- A copy of this communication & the attached maps.

Ramaswamy H. Sarma  
Chemistry, Rm: 234, Univ. at Albany, Albany NY 12222 USA  
Email: [rhs07@albany.edu](mailto:rhs07@albany.edu)  
Phone: 518-456-9362; Fax: 518-452-4955  
May 4 2011



**Tuesday, June 14: You are arriving Today**

1:00-11:00 pm	Mount your posters around LC-18 concourse
4:00-7:00	Dinner-Campus Center Cafe; you pay cash & buy
6:00-8:00	JBSD + Organizing Cmte Dinner, Sitar
8:30-12:00 am	Wine & Cheese Reception, Empire Commons,

**Wednesday, June 15**

<b>7:00-8:30 am</b>	<b>Breakfast, LC-18 Concourse</b>
<b>8:00-8:10 am</b>	<b>Welcome by VPR Dias, and Chairs Paul Toscano &amp; Richard Zitomer</b>
<b>8:10-10:25</b>	<b>Session 1: Proteins-I: New in Dynamics &amp; Folding</b> <i>Chair: Harold Scheraga, Cornell Univ.</i>
8:10-8:15	Remarks by the Chair.
8:15-8:35	Dave Thirumalai, UMD
8:35-8:45	Menahem Pirchi, Weizmann, Israel
8:45-8:55	Amrita Dasgupta, NCBS, India
8:55-9:05	Ghosh Dasdar, Bose Insti, India
9:05-9:25	Angel Garcia, RPI <i>Chair: Aditya Mittal, IIT Delhi, India</i>
9:25-9:45	Ken Dill, Stony Brook
9:45-9:55	Sanjeev Singh, Alagappa Univ, India
9:55-10:05	Priya Banerjee, Univ. at Albany
10:05-10:15	Adeleh Divsalar, Tarbiat Moallem Univ., Iran
10:15-10:35	B. Jayaram, IIT, Delhi, India
<b>10:35-11:25</b>	<b>Coffee and Poster Session I</b>
<b>11:25-12:30</b>	<b>Session 2. Proteins - II: New in Design &amp; Detection</b> <i>Chair: Neville Kallenbach, NYU</i>
11:25-11:30	Remarks by the Chair
11:30-11:50	Irit Sagi, Weizmann, Israel
11:50-12:00	Hriday Bairagya, NIT-Durgapur, India
12:00-12:10	Traaseth Nate, NYU,
12:10-12:30	David Cowburn, Albert Einstein
<b>12:30-1:40</b>	<b>Lunch, Campus Center Cafeteria &amp; Barbique Pit (open 11 am- 2 pm) you pay cash and buy</b>
<b>1:40-3:10</b>	<b>Session 3: Proteins-III: New Dynamics &amp; Allostery</b> <i>Chair: Miroslav Fojta, IBP, Czech Republic</i>
1:40-2:00	Richard Bryce, Univ. of Manchester, UK
2:00-2:20	Amnon Horovitz, Weizmann, Israel
2:20-2:30	Stan George, Univ. of Cincinnati
2:30-2:40	Moitrayee Bhattacharyya, IISc, Bangalore, India
2:40-3:00	Ivet Bahar, Univ. of Pittsburgh
3:00-3:10	Sefica Banu Ozkan, ASU, Tempe, AZ
<b>3:10-4:25</b>	<b>Session 4: Proteins-IV: Neurodegeneration</b> <i>Chair: Volodya Uversky, IUPUI</i>
3:10-3:30	Gary Daughdrill, Univ South Florida
3:30-3:50	David Eliezer, Cornell Univ
3:50-4:00	Sai P. Srinivasan, RPI
4:00-4:20	Akihiko Takashima, RIKEN, Japan
<b>4:20-5:15</b>	<b>Coffee &amp; Poster Session II</b>
<b>5:15-6:35</b>	<b>Session 5: DNA Nanotechnology</b> <i>Chair: Ned Seeman, NYU</i>
5:15-5:35	Ned Seeman, NYU
5:35-5:55	Kurt Vestreger Gothelf, Aarhus Univ
5:55-6:15	Friedrich Simmel, TU Munchen
6:15-6:25	Hari KK Subramaniam NYU
6:25-6:35	Graham Hamblin, McGill Univ.
<b>6:35-8:00</b>	<b>Dinner, Empire Commons, (open 5:30-7:45 pm)</b>
<b>8:00-9:10</b>	<b>Session 6: Nobel Laureate Evening Lecture</b> <i>Chair &amp; Introduction: Alex Rich MIT</i>
8:00-8:05	Jack Szostak, Harvard
8:05-9:05	
<b>9:30- 12:00 am</b>	<b>Reception for Jack Szostak, Empire Commons</b>

**Thursday, June 16**

<b>6:15-9:15 am</b>	<b>Breakfast, Hospitality Suites, Empire Commons</b>
<b>8:00-9:55</b>	<b>Session 7: Prebiotic Evolution</b> <i>Chair: Nobel Laureate Jack Szostak, Harvard</i>
8:00-8:05	Remarks by the Chair
8:05-8:25	Edward Trifonov, Haifa, Israel
8:25-8:45	Uwe Meierhenrich, Univ. of Nice, France
8:45-9:05	Ernesto Di Mauro, Univ. of Rome, Italy <i>Chair: Jiri Sponer, IBP, Czech Republic</i>
9:05-9:25	James Ferris, RPI
9:25-9:35	Christopher D. McFarland, Harvard
9:35-9:55	Nick Hud, Georgia Tech
9:55-10:05	Irena Mamajanov, Georgia Tech
<b>10:05-11:00</b>	<b>Coffee and Poster Session III</b>
<b>11:00-12:30</b>	<b>Session 8: Protein Evolution</b> <i>Chair: Anna Panchenko, NCBI</i>
11:00-11:20	Igor Berezovsky, Univ. of Bergen, Norway
11:20-11:30	Kosuke Hashimoto, NCBI
11:30-11:50	William Duax, Univ. at Buffalo <i>Chair: Dan Fabris, Univ. at Albany</i>
11:50-12:00	Ivanka Besseva, IBP, Czech Republic
12:00-12:10	Brandon Tolbert, Miami Univ. Oxford, OH
12:10-12:30	Loren Williams, Georgia Tech
<b>12:30-1:40</b>	<b>Lunch, Campus Center Cafeteria &amp; Barbique Pit (open 11 am- 2 pm) you pay cash and buy</b>
<b>1:40-2:30</b>	<b>Session 9: Artificial DNA</b> <i>Chair: S.Wijmenga, Radboud Univ., The Netherlands</i>
1:40-2:00	Peter Nielsen, Univ. of Copenhagen, Denmark
2:00-2:20	Maxim Frank Kamenetskii, BU
2:20-2:30	Marcus Wilhelmsson, Chalmers Univ., Sweden
<b>2:30-3:15</b>	<b>Session 10: What is New in Z-DNA</b> <i>Chair: Wolfram Saenger, Frie Univ. Berlin, Germany</i>
2:30-2:50	Alex Rich, MIT
2:50-3:10	Alpana Ray, Univ. of Missouri, Columbia MO
<b>3:10-3:40</b>	<b>Session 11 (Mini): Telomeres and Quadruplexes</b> <i>Chair: Nick Ulyanov, UCSF</i>
3:10-3:20	Katie Castor, McGill Univ.
3:20-3:30	Saptarpani Ghosh, Saha Insti, Calcutta, India
3:30-3:40	Lim Kah Wai, Nanyang Univ., Singapore
<b>3:40-4:25</b>	<b>Coffee &amp; Poster Session IV</b>
<b>4:25-6:20</b>	<b>Session 12: DNA Repair</b> <i>Chair: Rick Cunningham, SUNY at Albany.</i>
4:25-4:30	Remarks by the Chair
4:30-4:50	John A. Tainer, Scripps
4:50-5:10	Dmitry Zharkov, ICB, Novosibirsk, Russia
5:10-5:20	Sarah Delaney, Brown Univ. <i>Chair: Krystyna Zakrzewska, IBCP, France</i>
5:20-5:40	Reuben S. Harris, Univ. of Minnesota, Minneapolis
5:40-6:00	V. Enrico Avvedimento, Univ. Federico II, Italy
6:00-6:20	Mike Fried, Univ. of Kentucky
<b>6:20-7:40</b>	<b>Dinner, Campus Center Cafeteria (open 4:00-7:10 pm) you pay cash and buy</b>
<b>7:40-9:05</b>	<b>Session 13: Chromosomes</b> <i>Chair: Wilma Olson, Rutgers</i>
7:40-7:45	Remarks by the Chair,
7:45-8:05	Thomas Cremer, LMU, Germany
8:05-8:15	Ekaterina Khrameeva, IITP, Moscow, Russia
8:15-8:25	Khushhall Menaria, ANIT, Bhopal, India
8:25-8:45	Kazuhiro Maeshima, NIG, Mishima, Japan
8:45-9:05	Jonathan Widom, Northwestern Univ.
<b>9:05- 12:00 am</b>	<b>Trifonov &amp; Maxim host their Russian Party in their apartments</b>

<b>Friday, June 17</b>		<b>Saturday, June 18: You are going home today after lunch</b>	
6:15-9:15 am	<b>Breakfast, Hospitality Suites, Empire Commons</b>	7:15-10:15 am	<b>Breakfast, Hospitality Suites, Empire Commons</b>
<b>8:00-9:50</b>	<b>Session 14: Replication Meets Transcription</b> <i>Chair: Sergei Mirkin, Tufts Univ.</i>	<b>9:00-10:35</b>	<b>Session 18: DNA-Protein-I</b> <i>Chair: Tom Tullius, BU</i>
8:00-8:20	Sergei Mirkin, Tufts Univ.	9:00-9:05	Remarks by the Chair
8:20-8:40	Benedicte Michel, CNRS, Gif-sur-Yvette, France	9:05-9:25	Christoph W. Müller, EMBL, Heidelberg, Germany
8:40-9:00	Jorge B. Schwartzman, CIB, Madrid, Spain	9:25-9:45	Koby Levy, Weizmann, Israel
9:00-9:10	<b>Boris Belotserkovskii, Stanford</b>	9:45-9:55	<b>Lydia-Ann Harris, Univ. at Buffalo</b>
9:10-9:30	Sue Jinks-Robertson, Duke Univ.	9:55-10:05	<b>Steve Parker, NIH</b>
9:30-9:50	Michael O'Donnel, Rockefeller Univ.	10:05-10:15	<b>Racca Joe, Case Western Reserve</b>
9:50-10:00	<b>Yayan Zhou, Wesleyan</b>	10:15-10:35	Scot Wolfe, U Mass., Worcester
<b>10:00-11:00</b>	<b>Coffee &amp; Poster Session V</b>	<b>10:35-10:50</b>	<b>Coffee</b>
<b>11:00-12:30</b>	<b>Session 15: Cis Regulatory Modules; DNA Stuff</b> <i>Chair: Mikhail Gelfand, IITP, Moscow, Russia</i>	<b>10:50-11:55</b>	<b>Session 19: DNA-Protein-II</b> <i>Chair: Richard Mann, Columbia</i>
11:00-11:20	Martha Bulyk, Harvard	10:50-10:55	Remarks by the Chair
11:20-11:40	Vsevolod Makeev, GosNIIGenetika, Moscow, Russia	10:55-11:15	Remo Rohs, USC
11:40-12:00	Olga Ozoline, RAS, Pushchino, Russia	11:15-11:25	<b>Matt Slattery, Univ. of Chicago</b>
12:00-12:10	<b>Ivan Kulakovskiy, EIMB, Moscow, Russia</b>	11:25-11:35	<b>Todd Riley, Columbia</b>
12:10-12:20	<b>Alexander Lomzov, ICB, Novosibirsk, Russia</b>	11:35-11:55	Udo Heinemann, MDC, Berlin, Germany
12:20-12:30	<b>Alexander Ivanov, ICBCRC, Moscow, Russia</b>		
<b>12:30-1:40</b>	<b>Lunch, Campus Center Cafeteria &amp; Barbique Pit (open 11 am- 2 pm) you pay cash and buy</b>	<b>11:55-12:45</b>	<b>Session 20: DNA-Protein-III</b> <i>Chair: Barry Honing, Columbia</i>
<b>1:40-3:40</b>	<b>Session 16: Molecular Simulation: Breakthroughs</b> <i>Chair: Valeri Barsegov, Univ. of Mass, Lowell</i>	11:55-12:00	Remarks by the Chair
1:40-1:45	<i>Remarks by Chair</i>	12:00-12:20	Victor Zhurkin, NIH
1:45-2:05	Klaus Schulten, UIUC	12:20-12:40	Zippi Shakked, Weizmann, Israel
2:05-2:15	<b>Ilya Kovalenko, Moscow Sate Univ.</b>		
2:15-2:25	<b>Lilian Chong, Univ. of Pittsburgh</b>	<b>12:40-12:45</b>	<b>Barry Honing Closes the Conversation</b>
2:30-2:50	Ruxandra Dima, Univ. of Cincinnati		
2:50-3:00	<b>Peyel Das, IBM</b>	<b>12:45-2:00</b>	<b>Farewell Lunch Empire Commons</b>
3:00-3:20	Gianni De Fabritiis, Univ Pompeu Fabra, Spain		<b>Go Home After Lunch</b>
3:20-3:30	<b>Rajib Mukherjee, Tulane Univ.</b>		
3:30-3:35	<i>Chair: Tom Cheatham, Univ. of Utah</i>		
3:35-3:55	<i>Remarks by Chair</i>		
<b>3:55-5:00</b>	<b>Coffee &amp; Poster Session VI</b>		
<b>5:00-7:00</b>	<b>Session 17: Beverage Celebrations</b> <i>Chair: B. Jayaram, IIT Delhi, India</i>		
5:00-5:05	Remarks by the Chair		
5:05-5:25	Mihaly Mezei, Mount Sinai		
5:25-5:45	Ishita Mukerji, Wesleyan Univ.		
5:45-5:55	<b>Elizabeth Wheatly, Wesleyan</b>		
5:55-6:00	<i>Chair: Manju Hingorani, Wesleyan</i>		
6:00-6:20	Remarks by the Chair		
6:20-6:30	Matthew Young, Univ. of Michigan		
6:30-6:40	<b>Na Le Dang, Wesleyan</b>		
6:40-7:00	Tom Bishop, Tulane Univ.		
	David Beveridge		
7:30-12 am	<b>Big Feast, Campus Center Ball Room</b>		